

SouthEast Child Development Center Handbook

1540 Elmtree Road
Columbia, SC 29209

Shakeela Aslam, Director

Office: 803-776-0177

Fax: 803-776-1569

Email: scdc@sc.rr.com

SC DSS License #17,892

Table of Contents

Table of Contents	2
Welcome to SouthEast Child Development Center!	5
Our Program Philosophy	5
SCDC Staff	6
Enrollment Requirements	6
Hours	6
Holidays	6
Forms	7
Admission	8
Adjustment Period	9
Toilet Training	9
Child Advancement	10
Tuition Information	10
Billing and Payment Schedule	10
Account Credits	11
Additional Fees	12
Methods of Payment	13
Communicable Disease Credit	13
Vacation Credit	14
Closing Because of Bad Weather	14
Other Missed Days	14
Termination of Services	14
Withdrawal Notice	15
Medical and Sick Child Information	15
Absences	15
Communicable Diseases	16
Sick Child Procedures (Please see the Sick Child Policy attached to this Handbook)	16
Medication	17
Medication Emergencies	17

Substance Abuse	18
Allergies	18
Inclement and Excessively Hot or Cold Weather	19
Emergency Information and Procedures.....	19
Fire	19
Tornado	20
Evacuation Plan	20
Emergency Medical Plan	21
State and Federal Mandates on Reporting Child Abuse	22
Rights of the Licensing Agency	22
Staffing.....	23
Facility Arrangement and Classroom Structure	23
Dress Code.....	23
Nap Time	23
Opportunities to Participate.....	24
Parent Communication Procedures	25
Discipline Information	25
Food Service Information	26
Licensing	26
Arrival and Departure.....	26
Preschool Children.....	26
After School Children.....	26
School Bus Rules.....	26
Curriculum	27
Center Policies	27
Nondiscrimination Policy.....	27
Maintaining Confidentiality Policy	27
Unauthorized Persons Seeking Custody Policy	28
Child Movement Policy.....	28
Full and Free Access Policy	29

Clothing Policy	29
Toy Policy.....	29
Special Event Days and Field Trips Policy	29
Special Days.....	29
Birthdays.....	29
Field Trips	30
Inappropriate Language Policy	30
School Suspension Policy	31
Health and Safety Statement	31
Sick Child Policy	32
Timely Payment for Services Policy.....	33
Child Care Physical Activity Policy	34
Policy Statement	34
Physical Activity in Child Care	34
Child Care Discipline Policy.....	36
Policy Statement	36

Welcome to SouthEast Child Development Center!

Welcome to SouthEast Child Development Center (SCDC). We are glad that you are a part of our family. SCDC exists for several reasons. For preschoolers, our most important goal is to introduce those young children to Jesus in an atmosphere that is warm, loving, fun, and instructional. For elementary age children, our primary goals are to show them how God's world works as they learn from the school curriculum. For all the SCDC children we are committed to help their families to raise them to love the Lord Jesus Christ. That commitment includes partnering with the families to prepare the children spiritually, morally, mentally, socially, emotionally, and physically to meet the challenges that are ahead of them.

SCDC provides a Christ-centered environment that is safe and conducive to good health and where children can work, play, and learn together while being guided toward a happy, wholesome development.

Clear communication is one of the keys to a successful program. This Handbook contains specific information and requirements set forth by SouthEast Child Development Center and the State of South Carolina. After reading it, please sign the handbook acknowledgment form stating that you have received, read, and understood this information. We will keep this acknowledgment in your child's file. We must have a completed form by the time your child begins attending SCDC. SC DSS requires us to maintain this form and they will inspect it when renewing our license.

This Handbook is designed as a handy reference for you but is not intended to address every facet of the SCDC experience. We suggest you keep it in a convenient place for easy referral throughout the school year. Should questions arise, please contact your child's teacher or the SCDC Director.

Our Program Philosophy

The SouthEast Child Development Center is a program designed to enhance your child's spiritual, mental, social, and physical development. With this philosophy, young children learn through structured group time, active and quiet time, indoor and outdoor activities, and other opportunities. With an emphasis on the on-going planning of a "developmentally appropriate" classroom environment and routine, our program encourages children to learn through such activities as group devotions with Bible stories, moral lessons, exploring, manipulating, creating, pretending, daily reading, art, and music. Our teachers will strive to provide a Christian atmosphere of love that comes from their own personal relationship to Christ, along with a developmentally sound curriculum.

We believe that parents are a child's first and most important teachers and that partnership between family and school is essential to meet each child's needs. We welcome parents and encourage them to visit us often and participate in their child's experiences. We welcome questions and suggestions and

want to address any parental concerns. The children will benefit most from their SCDC experiences through a close relationship between parent and teachers.

SouthEast Child Development Center is licensed by the State Department of Social Services, and its license is contingent upon continued conformity to the requirements set forth by Federal and SC law and regulations.

SCDC Staff

Our staff consists of a director, teachers, cook, and a pastor who provides oversight. All staff members receive a minimum of 15 hours of training each year plus First Aid and CPR for adults, children, and infants, and we require all classroom teachers to complete a college level course in early childhood development (ECD101) or an equivalent provided by SC DSS.

Enrollment Requirements

Hours

SouthEast Child Development Center is open from 6:45 AM to 6 PM, Monday through Friday.

Holidays

SCDC will observe the following holidays:

New Year's Day, January 1, 2022	Thanksgiving Day and the Friday following, November 24 & 25, 2022
Memorial Day – Monday, May 30, 2022	
Independence Day, Monday, July 4, 2022	Christmas – Friday, December 23, 2022 and Monday, December 26, 2022
Labor Day, Monday, September 5, 2022	New Years, Friday, December 30, 2022 and Monday, January 4, 2023

In addition to the holidays listed above, SCDC will close for staff training on one Friday in July. We will post the exact dates when the schedule firms up. This training is to satisfy DSS training requirements

Full rates apply for all holiday and training weeks.

Forms

The following forms are a part of the enrollment process and are in the registration packet.

- **Handbook Acknowledgment Form**

A parent or guardian's signed verification that the parent has received read and agrees to abide by the policies and practices in this Handbook. The parent completes this form at enrollment and annually per DSS requirements. We keep the form in the child's file.

- **Enrollment Agreement Form**

This form specifies the tuition rate and payment schedule at the time of registration. Rates quoted are for the child's age at registration and will change as the child ages and we change rates.

- **DSS Form 2900**

This form records vital information required by our licensing agency, the South Carolina Department of Social Services. DSS requires we have you complete this form every year.

- **Supplemental Information Required by SCDC**

Parents specify who may pick up the child. We use this form to record those directions. Please have any person whose name is on this form bring a valid driver's license or state-issued ID card when picking up the child. They will not have to show this ID once the teachers and Director recognize them and associate them with your child.

SCDC has specific instructions for the Director and staff if an unauthorized person attempts to pick up a child. You will find this policy and procedure detailed later in this Handbook. Please know that we will not release a child unless you follow the proper procedures.

- **Emergency Medical Care Form**

This form gives us your permission to obtain emergency medical care should your child need such attention. This form requires the parent's signature to be notarized. SCDC has a notary on staff that can perform this action.

- **Field Trip Form**

This form applies only to elementary-age students. Preschool children do not take field trips. This permission form allows your elementary age child to go on SCDC sponsored field trips. All of our field trips have an educational goal. We will notify parents well in advance of any field

trips. We plan field trips primarily during the summer camp program. We list those trips in the summer camp schedule. Occasionally, we schedule a field trip during school vacations. In this case, we will advise the parents well in advance of the trip.

- **Photographs and Video Release**

A parent or guardian signed consent to photograph your child (including video). We keep this form in your child's file. We may use your child's photograph in materials used to promote SCDC. Parents complete the photo and video release form at the time of admission. The parent **must** give permission to photograph the child if an injury occurs at SCDC or if there appears to be an injury or illness on arrival.

- **Video Viewing Release**

We show video's only rarely and usually only to elementary-age children. This form does not apply to preschool children. When we do show videos, they will have a Christian theme approved by the Pastor or Director. This release form permits the child to view these videos.

- **Discipline Policy**

This policy describes how we handle discipline problems. By signing the Handbook Acknowledgment Form, the parent indicates their understanding and agreement with the policy. Note: parents must follow the SCDC discipline policy when disciplining their children while on the SCDC campus.

- **Copy of Birth Certificate**

If the child's original birth certificate is in a language other than English, the parent or guardian must submit a copy of the original birth certificate and a copy translated into English. If the birth certificate shows the child was born in a country other than the United States, we will require proof of legal residency.

- **Copy of Health Insurance Card That Covers the Child**

Admission

Each child shall be ready for the type of group experience that SCDC has to offer and benefit from the program.

- We expect children to have an age-appropriate level of self-discipline, eagerness to learn, and respect for authority. The child will learn part of this at our Center, but the rest is the responsibility of the parent(s) to reinforce when the child is away from the Center.
- Parents must understand that we may withdraw a child from the Center upon the teacher, Director, and school Pastor's joint decision in case of a significant discipline problem. We want the best for all children in our Center.
- At our option, we may accommodate children with significant physical, emotional, cognitive, behavioral, and learning disabilities. Parents must understand that, at some point, these children usually grow out of our capability to help them. For example,
 - We cannot serve a 4-year-old child who is not yet toilet trained because of some developmental issue.
 - Our mission is to teach children the essential tools needed to do well in school and future life. A child who cannot focus when it is time to learn may need professional help that we cannot provide.
 - We do not have special needs classes as public schools have.
- When appropriate, we will refer parents to BabyNet and other state resources to help with situations for which we cannot help.

Adjustment Period

Starting school for the first time often causes anxiety for children. We recommend that you visit the Center before the child's first day, allowing him or her to meet some of the staff and see other children at play. We will work with you and the child to make this adjustment period a positive experience. We recommend that you give your child at least one month to adjust to the Center experience.

Toilet Training

We begin toilet training in the two-year-old room. Children must be able to toilet themselves by their third birthday. Once toilet training begins, we expect total cooperation from the parents in our training routine. If the parents want to use a different training routine for the child, they must disenroll until the child can toilet themselves and re-enroll. If the child cannot toilet himself or herself by his or their third birthday, we will disenroll the child until he or she can. We cannot have untrained children in the three-year-old room, and we cannot have three-year-olds in the two-year-old room. However, at our discretion, we may have an untrained child in pull-ups spend part-time in the three-year-old room, but we will charge the parent two-year-old room rates until the child is thoroughly toilet trained.

Child Advancement

We move children to the next age classroom as close to their birthday as enrollment will allow. We will coordinate this move with the parent.

Tuition Information

We are a full-time childcare facility; children enrolled as part time pay the same rate as full time children. Our rates are as follows:

Age	Weekly Rate
6 weeks to 12 months (0-1 year)	\$250.00
12 months to 24 months (1-2 years)	\$250.00
24 months to 36 months (2-3 years)	\$230.00
36 months to 48 months (3-4 years)	\$220.00
48 months to 60 months (4-5 years)	\$220.00
60 months to 72 months (5-6 years)	\$220.00
Elementary – K5 to 5 th Grade (school in session)(HT)	\$105.00
Elementary – K5 to 5 th Grade (school not in session)(FT)	\$140.00

Monthly rates are four times the weekly rate.

Billing and Payment Schedule

Our job is to provide high-quality childcare at a reasonable price. We advise parents of the child's cost when they enroll their child and weekly after that in a printed statement. Parents are responsible for the entire cost of childcare. They have several options for making payments, but ultimately the parent is responsible for the costs incurred.

The parent has the option of paying for childcare either weekly or monthly. SCDC will bill the parent according to the plan chosen. Your enrollment agreement and your statement reflect your choice. You may change your preference by giving us seven days' notice. We accept cash, checks, credit and debit cards, or money orders. All payments must identify the child or children for whom payment is made. We will issue a receipt for all payments.

If the parent chooses to pay every other week, they may do so by paying for the current week and prepaying for the next week. They may not pay in arrears.

If the parent receives assistance from ABC or other public assistance agency, the parent must arrange for the agency to pay SCDC. If the agency does not pay the total published SCDC rate for the care provided, we will bill the parent for the difference.

SCDC will not allow a child to attend on Monday if their account shows a balance due at 6:00 PM on the previous Friday unless you pay the full amount when the child arrives. We will not accept your child while you go to the ATM or if you promise to bring the money later in the day. If you manage to slip by us and get your child into the classroom and leave, we will call you and ask you to pick up your child or bring the money within the hour. If you fail to comply, we will disenroll your child effective immediately, and we will not allow you to re-enroll. We will also contact ABC, if applicable, and advise them of our action.

We deposit all receipts daily. If you pay by check, be sure your account has funds to cover the check amount.

If you encounter temporary financial difficulties, contact us about possible special arrangements. We want to work with you for your child's benefit. However, if you fail to honor any agreement or understanding we make with you, this will result in immediate disenrollment with no opportunity to re-enroll in the future.

We expect payments the week you receive childcare services or earlier. If you are on a monthly payment option, the monthly tuition is due not later than the 5th of the month.

Account Credits

We will credit your account with \$5 per week for each child enrolled from the same family after the first child. We apply these discounts to the oldest children's accounts. To qualify for this credit, all the children must share the same parent, and that parent must be the one responsible for paying SCDC tuition or co-payments.

We will credit your account with \$50 for each child you refer to SCDC. The conditions for this credit are as follows: (a) the child you refer must be enrolled continuously for 60 calendar days before we will apply the credit; (b) the adult responsible for the child must have a record of on-time payment of tuition or co-payments; (c) the adult responsible for the child recognizes you as the one person responsible for them coming to SCDC.

We will credit your account with \$100 for each teacher you refer to SCDC. The conditions for this credit are as follows: (a) the SCDC director and Pastor have sole discretion on the hiring of any staff member; (b) the staff member you refer must meet all DSS and SCDC requirements and satisfactorily complete their 90 day probation period before we will apply the credit; (c) the staff member recognizes you as the one person responsible for them applying to SCDC for a teaching position.

If your child is out because of an infectious disease (or hospitalization for any reason), we will credit your account for days missed. See Communicable Disease Credit below. The limit on this credit is ten school days per year.

If your child is absent because of vacation, we will issue a partial or full vacation credit for the week. See Vacation Credit below.

Occasionally, we may conduct a fund raising activity. As a means of encouraging parental participation, we may offer an account credit. We will specify the exact terms and conditions of the account credit at the time of the fundraiser.

Additional Fees

SCDC charges a \$50 one-time, non-refundable registration fee per family. This registration fee will hold your child's space for two weeks if there is no waiting list for that class. If there is a waiting list, we will add your child to the waiting list when we receive the registration fee. When space opens for your child, you will have two weeks to accept that space. If the child does not begin attending SCDC within the two-week window, you will forfeit the registration fee.

The Summer Camp activity fee is for elementary age children attending our Summer Camp. We charge this fee when the child registers for the summer camp program and covers the summer program T-shirt and all field trip expenses.

We charge \$30 for any check that your bank refuses to pay, plus whatever charge our bank assesses for a bad check. On the day we receive notice from our bank that they refused your check, we will call you and ask you to either pick up your child within the hour or bring cash to cover the check. If you have two refused checks within one year, we will require you to make all tuition payments in cash or debit, or credit card.

You must pick up your child(ren) by 6 PM. If you pick up your child after this time, we will add a late pickup fee of \$20 per hour per child to your bill. We will contact you at the phone numbers on file with the SCDC office if you do not pick up your child(ren) by 6:15 PM. If you do not pick up your child(ren) by 7:00 PM, we are required to, and will, notify Child Protective Services. The time on the sign-in and sign-out computer is the official SCDC time.

SC DSS, and our policy, require that every child sign in when they arrive and sign out when they leave. If you (or your designated pickup person) neglect to do this and we have to perform that function for you, we will charge you \$5 per incident.

We require children under the age of 60 months to have two changes of clothes in their backpacks. If your child does not have a change of clothes at SCDC when needed, we will provide whatever new or used items are necessary so the child is clean and dry. We will charge you for each item we use. Similarly, if the child is in diapers or pull-ups, and the parent fails to provide an adequate supply, we will give new diapers or pull-ups and charge the parents for each item used. Check the Director's office for the prices for clothes and diapers.

Methods of Payment

Cash Payment: Please see either the Director or the Pastor. We will provide a receipt for the amount of the payment. PLEASE DO NOT GIVE PAYMENTS TO ANY OF THE TEACHERS.

Check Payment: Write the child's name on the Memo line and place the check in the payment box. Your bank statement will be your receipt. If you require a separate receipt from us, see either the Director or the Pastor. Failure to indicate the child's name on the check may lead to accounting errors for which SCDC will not be held responsible.

Credit Card Payment: See the Director or Pastor. We accept Visa, MasterCard, American Express, and Discover Card.

Communicable Disease Credit

If your child contracts one of the infectious diseases listed below, we will credit your account with the full tuition amount when the child is absent up to a maximum of ten school days per year (we will pro-rate as necessary for partial weeks). To take advantage of this credit, you must submit a written note from your doctor that the child may not attend school or daycare because of the disease. **This note must identify the disease!** You can get forms for this credit from the Director. You may not combine this credit with any other credit.

DSS regulations require that we notify all parents and staff if one of these diseases appears in the Center. Please let us know as soon as possible if your child contracts one of these diseases.

Purulent conjunctivitis (defined as pink or red conjunctiva with white or yellow eye discharge)

Pediculosis (head lice)

Scabies

Tuberculosis

Impetigo

Strep throat or other streptococcal infection

Varicella-Zoster (Chickenpox)

Pertussis

Mumps

Hepatitis A virus

Measles

Rubella

Shingles (herpes zoster)

Herpes simplex

Meningococcal infection

COVID-19

Surgery of any type (surgery does not require notification to other parents)

Vacation Credit

You may reserve your child's space at SCDC while you are on vacation by paying 50% of the tuition for the time you are gone. Vacation weeks are the five consecutive days when we open on Monday and ending when we close on Friday. (This is the only definition of a "vacation week" that we will honor.) The child must be absent from SCDC this entire time to receive the vacation credit. You are limited to two such weeks per year.

After your child has attended SCDC for one or more years, you may claim one "vacation week" per year and pay nothing while you and your child are on vacation. Please notify the Director in advance of your vacation plans so that we can adjust billing accordingly.

If your child attends SCDC for any portion of a week, we will charge the full tuition rate for that week.

Closing Because of Bad Weather

In bad weather (hurricane, snow, ice, etc.), the SCDC Director and Pastor will decide if SCDC will close or remain open. We will announce that decision on the school web site: www.scdconline.org.

Other Missed Days

SCDC tuition rates take into account holidays, school closed days, bad weather days, staff training days, and days missed. There are no other discounts or credits besides those listed in this Handbook.

Termination of Services

SCDC reserves the right to terminate child care services if:

- The child's medical records are not kept current. We must have current, unexpired immunization information on your child.
- The child exhibits disruptive or destructive behavior, including physical or verbal abuse of any member of the SCDC staff, another enrolled child, or family member of an enrolled child. Physical abuse includes, but is not limited to, intentionally kicking, biting, spitting at, or hitting. Verbal abuse includes, but is not limited to, screaming, cursing, and repeated defiance of requests to follow directions. Destructive behavior includes

the intentional destruction of SCDC property, or the property of another student or staff member. Determination of intentionality is the sole responsibility of the SCDC Director and the Director's decision cannot be appealed.

The first occurrence will result in an immediate suspension from SCDC for the rest of the day.

The second occurrence will result in a suspension for five consecutive school days. The parent will be charged vacation rate for these days.

The third occurrence will result in expulsion.

- Parents or guardians fail to pay fees or fail to abide by the policies and procedures discussed in this Handbook.
- A parent, or other person designated to pickup the child, engages in physical or verbal abuse or destructive behavior, as defined above.

Withdrawal Notice

We require a two-week advance written notice for withdrawal of a child from SCDC. Please use the form provided by the Director. We will allow you to re-enroll your child without paying a new registration fee if your child returns to SCDC within two weeks of withdrawal, provided there is space available in the child's class.

Medical and Sick Child Information

Absences

We plan our programs, assuming that every child will attend from 9 AM to 3 PM. If you cannot bring your child by 9 AM, please contact the Director.

If your child is absent due to illness with an infectious disease, please let us know as soon as possible. We are required to notify all parents of infectious diseases.

If your child is on the ABC program, we will report all absences as absences on the bi-weekly ABC report. We will not record absences as vacation even if the child is on vacation unless the parent pays the full vacation rate before the absence.

The sign-in computer is the official record of the child's attendance. If the parent or child fails to sign-in, the child will be considered absent. If the child receives ABC support and the parent

fails to sign the child in, we will report the child as absent. ABC has a limit on the number of absences a child may have before ABC terminates support.

Communicable Diseases

State regulations require that we observe each child on arrival at the school by a person capable of recognizing common signs of infectious diseases or other evidence of ill health. A child who is sick upon arrival will not attend. Children who become sick during the day will be separated from the other children until the parent or guardian can pick up the child.

When children have been exposed to communicable diseases such as COVID-19, hepatitis, chickenpox, measles, or strep infection, all staff members, parents, and guardians of all children will be notified immediately by SCDC. We ask that you seek your physician's advice and always notify us of any infectious disease. A release from your child's physician is required for the child to re-enter the classroom.

Sick Child Procedures (Please see the Sick Child Policy attached to this Handbook)

If a child becomes ill while at SCDC, the parent or guardian will be contacted and expected to pick the child up as soon as possible. The child will be separated from the other children until the parent's arrival.

If a child displays any of the following symptoms, he or she may not attend:

- Fever of 100.0 or above
- Diarrhea
- Nasal secretion that is thick, yellow or green, and accompanied by a fever.

Cloudy or colored nasal secretions may indicate an allergy. Please check with your doctor to rule out infection.

- Sore throat with fever or throat spots.
- Cough accompanied by fever, chills, and the coughing up of green or yellow mucous, vomiting, or nausea.
- A doctor should check eye drainage of any type to rule out bacterial infection.
- A doctor should check unusual rashes to rule out bacterial infection.
- The child is not feeling well, such as lethargic behavior or increased crying.

The child may return to the school after an illness when:

- The child's temperature has been normal for at least 24 hours without using medications.
- Nausea, vomiting, or diarrhea has subsided for 24 hours.
- The child has had at least four doses of antibiotics over 24 hours for any strep or bacterial infection.
- The child is feeling well again, and normal behavior has returned.

SCDC has a separate area where sick children can rest comfortably and be properly supervised while waiting for a parent to pick them up. Parents or designated responsible adult (as specified in the child's records) must pick the sick child up within 60 minutes of notification.

Medication

We will give or apply medication, including individual special medical procedures, only on a written order or a prescription from a physician to the child's parents(s) or guardian(s). **We do not give over-the-counter medications unless provided with a written prescription from a physician. Under no circumstances will we give aspirin or aspirin products to a child.** All prescribed medications must be in their original container. The parent or guardian must sign the Medication Form indicating dosage and length of the prescription term, including a liability release. Under no circumstances will SCDC administer the first dose of any medication to a child. You may ask the Director for Medication Forms. These forms indicate the medication, the quantity to be given, and the time the medication is to be provided.

Medication Emergencies

DSS requires that we advise parents that these are our procedures in case of one of the following medication emergencies:

Giving the correct child too little medicine:

- If the error is caught at the time of administering the medication, additional medication will be given to make the total amount correct. Notation of the error and corrective action will be noted on the Medication Form and the parent advised.
- If the error is caught after the child has been returned to his or her room, there may be some uncertainty about what dosage was actually given. In this case, the Director will contact the parent and seek guidance. This contact and the resulting action shall be documented on the Medication Form.

Giving the child too much medicine:

- This is a potentially serious overdose emergency. The Director shall contact the parent first indicating the time and actual dosage given. If the parents are not available, the

Director shall call the pediatrician on record and seek advice. If the pediatrician is not available, the Director shall call 911 and report a possible drug overdose.

- The Director shall record the error and the steps taken on the Medication Form.

Giving the wrong child the medicine:

- The Director shall contact the child's parent, indicating the time, medication given, and dosage, and seek advice.
- If the child begins to exhibit any unusual behavior, the Director shall call 911 and advise the parent.
- The Director shall prepare an Incident Report detailing the error and steps taken.

Failing to give the correct child any medication:

- This is the case where the Center forgets to give the child scheduled medication
- If the oversight is recognized within 1 hour of the scheduled time for the medication, the Director shall administer the appropriate dose and note the time and dosage on the Medication Form.
- If the time is later than one hour after the scheduled time, the Director shall call the parent and seek advice.

The correct child receives the correct medication but has an adverse reaction

- The Director shall call the parent and seek advice. If the parents are not available, the Director shall call the pediatrician on record and seek advice. If the pediatrician is not available, the Director shall call 911 and report a drug reaction.
- The Director shall record the child's reaction and the Director's steps on the Medication Form

Substance Abuse

- SCDC is an alcohol free, smoke free, and drug free Center. We will challenge any person who appears to be under the influence and refuse to allow them to remove a child from our custody. The person will be escorted off the campus and the respective parents contacted.
- If the person under the influence brings a child to the Center, we will accept the child and report the person to the parent. If the person under the influence is driving, we will attempt to record the vehicle color, make and model and license plate and report this information to the Richland County Sheriff.

Allergies

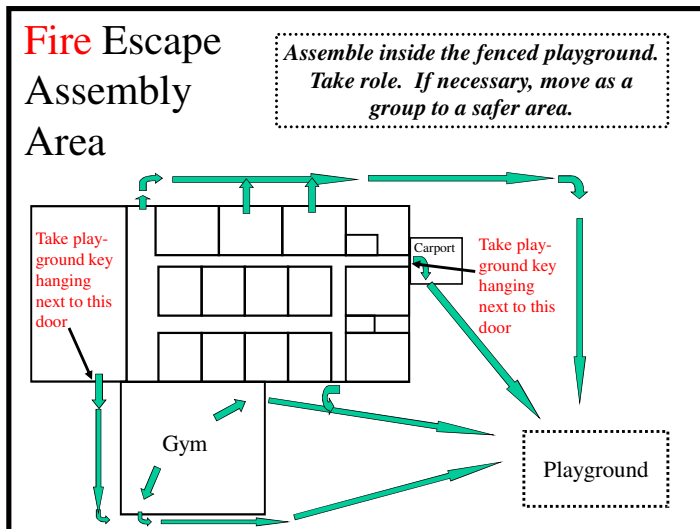
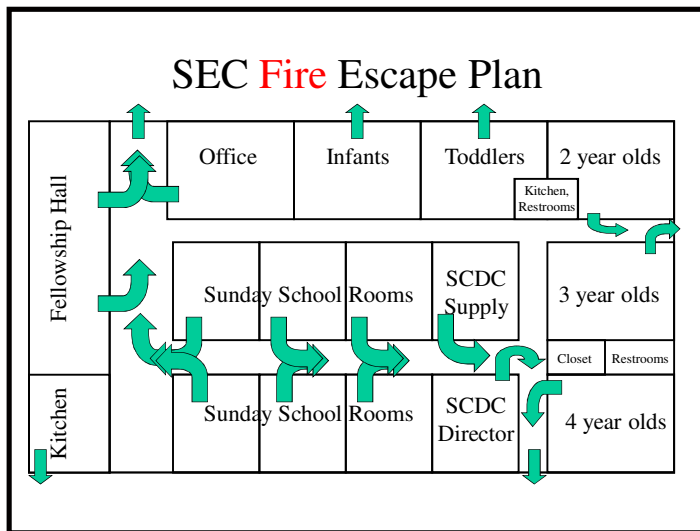
All allergies to medication, foods, pollen or dust, or other substances must be stated on the enrollment forms. South Carolina state law requires that we have a signed note from your

physician stating any food allergies that your child may have. The physician must recommend alternate food choices for your child. Information about children with allergies will be posted in all classrooms and in the kitchen. We cannot make exceptions to our program for children who do not have a physician's diagnosis nor recommended alternatives to our program.

Inclement and Excessively Hot or Cold Weather

On days of inclement or excessively hot or cold weather, children will be kept inside the classrooms. Special activities and focus will keep children involved and comfortable. We use the thermometer at the entrance door and the Child Care Weather Watch chart next to the sign-in and sign-out computer to determine when children may or may not go outside. In addition, we have radios tuned to the National Weather Service broadcasts of severe weather warnings.

Classrooms have both heating and air conditioning for your child's comfort. During the summer months, you may send sunscreen with your child (place the child's name on the container) and it will be applied before outdoor play. No sunscreen will be used unless provided by the parent.



Emergency Information and Procedures

SCDC has staff certified in infant and child care CPR and infant and child first aid. In the case of any accident, assessment and treatment of the injury will be given under the supervision of the teacher or Director. If further treatment is deemed necessary, the parent, guardian, or emergency contact person will be called. All accidents are recorded on an accident report form that requires the signature of the parent.

Fire

In the event of fire, students will be escorted to the outdoor playground. The route and procedure for each classroom are posted in that room. SCDC practices periodic fire drills to ensure both students

and staff is familiar with the procedure for exiting the building. A copy of that procedure is shown above. The school is inspected on a regular basis by the fire marshal and our fire alarm system is tested annually by a licensed alarm company. The most recent inspection information is located in the Director's office.

Tornado

SCDC has weather radios in the building and on many of the staff cell phones. We also have automatic email notifications of severe weather. When we receive information about a tornado watch, we activate all these systems. When we receive a tornado warning, children and staff will move to the Sunday School rooms on the diagram above. These are interior rooms with no windows. There they will take cover until the storm has passed.

Evacuation Plan

This plan will take effect in the event it is necessary to evacuate the building for any reason. The plan is organized in stages that may be implemented depending on the nature of the reason for evacuation.

Stage 1 – Remove the children from the building

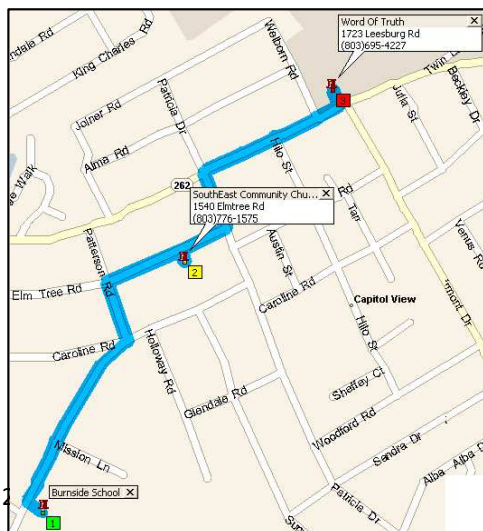
Children will move in an orderly fashion to the Center playground. The playground is sufficiently removed from the facility that the children will be safe until they can be moved to a second location, if necessary.

The Director shall maintain a "Go bag" with the names and phone numbers of all parents of enrolled children. The Director shall take the "Go bag" with her when she evacuates the facility.



Stage 2 – House the children in a substitute building

If the facility will not be habitable for the remainder of that day and if the playground is unusable because of weather or other conditions, the children shall move from the playground to the SouthEast Community Church sanctuary building until the parents can be

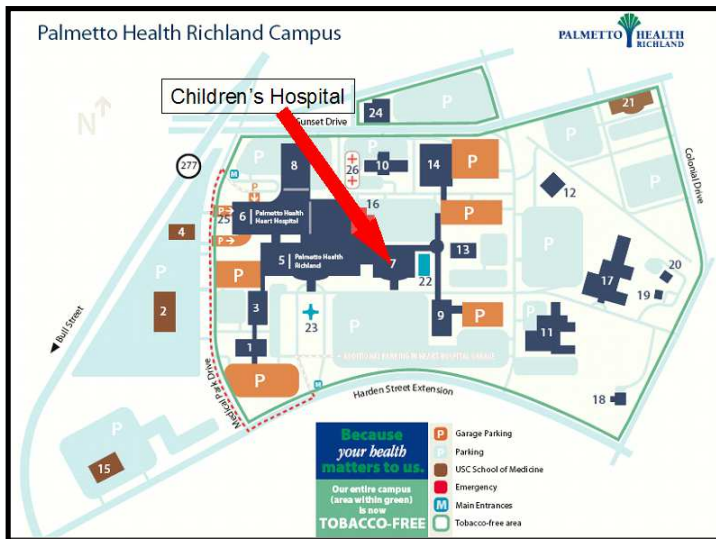


contacted. SouthEast Community Church is the parent organization for SouthEast Child Development Center.

If the church sanctuary building is not usable, the children will be moved to Burnside Elementary School, 7300 Paterson Rd, until the parents can be contacted.

Stage 3 – Contact the parents to arrange for them to pick up the children

The Director shall contact each of the parents and advise them of the situation, the physical condition of their child(ren), and the exact address where the child (ren) are located.



Stage 4 – Reopen the facility

The Director shall consult with the appropriate agencies and officials to determine when the Center facility may be reopened for business as usual.

Training of Staff

Staff shall be trained along with children through regular fire and evacuation drills. These will include evacuation to the playground, the sanctuary building and practice loading children and staff on the school bus for transportation.

Emergency Medical Plan

When a child is involved in a life-threatening accident or situation, such as (but not limited to):

- Unconsciousness, fainting, or no response when spoken to
- Choking
- Swallowing a poisonous substance and not acting as usual
- Rhythmic jerking and loss of consciousness

Directions from SCDC to Palmetto Health Richland
7.7 miles; 16 minutes
 0.0 mi Depart 1540 Elmtree Rd, Columbia, SC 29209 on Elm Tree Rd (West) for 131 yds
 0.1 mi Turn RIGHT (North) onto Patterson Rd, then immediately turn LEFT (West) onto SR-262 [Leesburg Rd] for 1.3 mi
 1.4 mi Turn RIGHT (North-West) onto US-378 [US-76] for 4.0 mi
 5.4 mi Bear LEFT (West) onto US-1 [US-378] for 0.3 mi
 5.8 mi Turn RIGHT (North) onto Harden St for 0.4 mi
 6.2 mi Road name changes to SR-555 [Harden St] for 1.1 mi
 7.2 mi Bear LEFT (West) onto Harden St Ext for 0.3 mi
 7.5 mi Turn RIGHT (North) onto Medical Park Rd for 0.1 mi
 7.7 mi Arrive Palmetto Health Richland [Medical Park Rd, Columbia SC 29203, (803)434-7011]

- Trouble breathing, shortness of breath or not being able to speak more than 2 or 3 words
- Skin or lips that look blue, purple, or gray
- Vomiting blood
- Increasing or severe lasting pain
- Bleeding that will not stop or a cut that's large, deep, or involves the head, chest, or belly
- Neck stiffness or a rash with fever
- Severe bleeding or head trauma
- A burn that's large or involves the hands, feet, groin, chest, or face
- A change in mental status like suddenly becoming unusually sleepy or confused
- A rapid heartbeat that doesn't slow down
- Confusion or strange, withdrawn, and less alert behavior

We will call 911 and a staff member will accompany EMS and the child to Children's Hospital at Richland Memorial. Parent permission for emergency medical treatment is given on the child's confidential form and it will accompany the Director to the hospital. The parents will be contacted by the school office and asked to meet the child and staff member at the hospital.

If a child is involved in a non-life threatening accident and medical attention is required, parents will be contacted to take the child to the doctor. When parents aren't able to be reached, the child will be transported by the Director to the child's doctor and parents will meet them there.

State and Federal Mandates on Reporting Child Abuse

All staff of SCDC are required by South Carolina state law to report any suspicion of child abuse. If a parent or other person not on staff with SCDC reports potential child abuse to us, we will document that conversation and have the person making such report sign the documented claim. We will then advise the appropriate authorities. If the person making the claim refuses to sign the documented claim, we will also make note of that refusal.

Rights of the Licensing Agency

The State of South Carolina Department of Social Services - Childcare Licensing Department has the right to visit the school location and perform inspections of the classroom and programs, including interviewing of students and staff. They may also review all student and staff records.

Staffing

All SCDC School staff are fingerprinted and have a Child Abuse Index clearance. They have training and college-level course work in Early Childhood Education and meet all requirements set forth by SCDC and the State of South Carolina. Our staff is here to train, love and care for your child.

Facility Arrangement and Classroom Structure

All school needs and functions are contained within the school area, including sign-in and -out, office, sick room, bathrooms, classrooms, play areas, and rest areas. Equipment and supplies have been purchased and specifically designed to be age-appropriate and developmentally appropriate for those who attend SCDC.

Dress Code

Please dress your child in comfortable, easily washable clothing. Children can get dirty in the course of activity and active learning. **For safety reasons, footwear thongs, sandals, and other open-toe shoes are not permitted. Children must wear shoes that cover the entire foot.** Be sure that all items (jackets, lunch boxes, blankets) are well marked with your child's name in permanent marker. We don't allow any combat or action figure apparel nor do we allow pants with torn legs or loose fabric – these are safety hazards during active play. Children age 5 and under may not wear beads in their hair. These are choke hazards and curious children often try putting a loose bead in their nose or ears.

While we will use reasonable measures to protect the property of clients, SCDC assumes no responsibility for any items lost, stolen, or mysteriously disappearing from our facility or grounds. If you send toys, backpacks, car seats, winter coats, hats, or similar items to SCDC, be sure they are marked with your or your child's name to avoid having someone else take them home.

Nap Time

We provide a cot and sheet for each child for a daily rest period. These items are laundered each Friday. Parents may send their own blanket if they wish. Parents are required to take home and wash blankets they provide each Friday.

Opportunities to Participate

We welcome parent involvement in the school classroom, and we believe that it benefits not only the school but also the parent and child. Parents are encouraged to participate in the classroom as a helper with advance notice to the teacher. Parent participation enables the teacher to offer a variety of creative activities for students. Parent helpers may not be alone with any child (this includes their own child) while the child is signed in to SCDC.

The state of South Carolina requires that all parents who participate in the SCDC classroom must have a current negative TB test on file and a clear SC SLED and FBI background check. All parent volunteers must sign-in when they come to work in the classroom.

Parents are free to observe a class on a non-interference basis at any time. Please advise the Director when you plan to take advantage of this opportunity.

Daily Schedule

(Sample)

6:45 – 9:00 AM Arrival, health inspection, greeting, and welcome. Children have indoor play and center time. We serve breakfast from approximately 7:30 to 8:30 AM

9:00 – 10:00 AM Curriculum activity and classroom time (depending on age group) including devotions, centers, singing and sharing, small group learning, class activities and play time (indoor or outdoor), Bible time.

10:00 – 10:45 AM Restroom break and outdoor play

10:45 – 11:15 AM Continued curriculum activity including, music and rhythmic activities, Active work and play period; Group and small group activity and learning centers, class celebrations may be included here if applicable.

11:15 – 11:30 AM Evaluation of the morning, discussion about next day's schedule, singing and clean up.

11:30 – 12:15 PM Lunch, clean up, restrooms and wind-down activities

12:30 – 2:45 PM Story, naptime, and quiet play as children awaken from naps

3:00 – 3:30 PM Afternoon snack, craft and restroom break

3:30 – Departure activity and outdoor play periods.

During the school year, elementary age children arrive at SCDC between 2:30 and 3:10 PM. Their schedule includes: having a snack, working on homework, and outdoor activities, in that order.

Parent Communication Procedures

We want to do our best to keep all our families informed about what is happening here at SouthEast Child Development Center. Parents need to be aware of several very important forms of communication that we use. Each classroom bulletin board has a weekly, detailed lesson plan as well as a broad plan for the year. This will include learning goals such as shapes, sounds, letters and such that are being worked on in class. Weekly activities are based on a theme, which addresses different areas of growth. A daily and weekly schedule is posted that outlines the approximate times when activities are conducted throughout the day.

The teachers and the Director are available throughout the year for individual conferences with parents.

Discipline Information

Discipline has an important place in the school program at SouthEast Child Development Center. Parents and teachers need to work together in order to be consistent and effective in training children to make appropriate choices in a classroom setting. We have developed a discipline formula we believe is appropriate in shaping and encouraging responsible behavior.

We strongly believe in and practice assertive discipline and prevention. Teachers are trained to redirect a potential problem and assist children in finding and implementing resolutions to conflict. Positive reinforcement, praise and modeling are the main methods used to maintain a child's behavior. In cases where a child needs to regain self-control or is in danger of hurting themselves or others, the child may be momentarily separated from the group for a "time out" not to exceed a length of one minute for each year of a child's age. No child shall be shamed, humiliated, or otherwise intimidated as a part of correction. Corporal punishment is not practiced at SCDC. We strive to facilitate conversation and communication among the children even in discipline issues. We want to train the children in making good choices for their behavior.

Food Service Information

SCDC has an on-site breakfast and afternoon snack program. Because children's tastes vary widely, we do not prepare lunch. Instead, we ask parents to provide a "bag" lunch that they know the children will eat. If needed, we will refrigerate lunches parents send, but we are not able to warm up those lunches.

Licensing

SouthEast Child Development Center is licensed by the State of South Carolina; licensing information is available in the school office and is posted next to the tuition payment box.

Arrival and Departure

Preschool Children

An authorized adult must sign-in and sign-out children daily. This is required by both SCDC and the State of South Carolina. We use the Brightwheel child care management system for tracking arrivals, departures, and movements during the day. Parents download an app on their phones that allows them to sign children in and out, pay tuition, communicate with the teachers and see daily activities of their children.

It is our policy that only adults open and close doors and gates. Please help us train the children by observing this policy. This will help to ensure children stay within the designated area and not feel free to set out on their own.

After School Children

We sign in the afterschool children when they get on the bus. The person who picks up the children is responsible for signing them out. When school is on vacation, we expect the parents to use the app to sign in and out.

We expect parents or guardians to advise us when their child will not be at the school when we pick up children. This courtesy will prevent delays while we check with school attendance personnel for a child who was absent or taken home by a parent or guardian.

School Bus Rules

We expect all children riding the SCDC bus to follow these rules:

1. Children sit in their assigned seats
2. While on the bus, children must use indoor voice.

4. Children may only talk to their seatmate. They may not talk to any other child on the bus.
5. Children must fasten their seat belt and pull it tight as soon as they sit down and keep the belt on until the bus comes to a complete stop at SCDC.
6. When leaving the bus, the front seats exit first, the rear seats exit last.
7. Children must keep their hands to themselves.
8. Children may not eat or drink on the bus.

Curriculum

SCDC preschool classrooms use the WEE-Learn™ preschool curriculum, published by LifeWay in conjunction with other supplemental activity material available at K5LEARNING.COM. This curriculum is developmentally solid, age-appropriate, and Christ-centered.

The three and four year old classrooms use the pre-Kindergarten and Kindergarten curriculum produced by Memoria Press. This introduces children to the basics of reading and math needed for entry into public school.

Our elementary-age curriculum is based on the Richland 1 School District goals and objectives. During the school year, our curriculum is driven by the child's homework. During the summer program, the curriculum is a review of the key math, science, and reading objectives of the child's previous grade and an introduction of the objectives in these areas the child will see in his or her next grade. Our elementary age teachers are able to tutor your children in areas where the child is weak. This tutoring is continuous and year round.

Center Policies

Nondiscrimination Policy

SouthEast Child Development Center operates on a nondiscriminatory basis, offering equal treatment and access to services without regard to race, color, national origin, or ancestry. By enrolling their child at SCDC, parents acknowledge and understand that the teaching will be from a Christian, Biblical worldview and no other worldview will be presented.

Maintaining Confidentiality Policy

SouthEast Child Development Center (SCDC) will maintain the confidentiality of information about the child and family. Enrollment forms and all other information concerning the child and the family, compiled by SCDC, will be accessible only to the parent or legal guardian and

The SCDC Operator (currently Pastor Roger Gounaud),

SCDC Director,

South Carolina Department of Social Services (SC DSS) Licensing Specialist,

South Carolina Department of Health and Environmental Services (SC DHEC), and

The South Carolina Advocates for Better Care (ABC) Program.

Information concerning the child will not be made available to anyone else, by any means, without the express written permission of the parent or legal guardian.

Unauthorized Persons Seeking Custody Policy

The SCDC Operator or Director will contact the custodial parent or legal guardian specified in the Application for Child Care Services, DSS Form 2900.

Telephone authorization to release a child to someone who does not usually pick up the child will be accepted only in concert with prior written authorization from the custodial parent or legal guardian for such an exceptional release. The staff person who accepts such authorization will call the previously documented phone number of the parent to verify that the parent is activating a phone authorization for release of the child. The staff person will document the results of this call in the child's record, as well as the time and to whom the custodial parent or legal guardian gave telephone authorization for release of the child.

No child will be released without the presence or permission of the custodial parent or legal guardian.

Any authorized person who is not recognized by the staff will be required to provide photo identification such as a driver's license, work or school ID before the child is released. The custodial parent or legal guardian may provide a photograph of authorized persons for pick up of the child, which will be kept in the child's record at the facility.

The SCDC Operator or Director will notify the Richland County Sheriff if an unauthorized person seeks custody of the child.

Child Movement Policy

DSS and SCDC both require staff to record child movement while children are on the campus of SCDC. SCDC staff will use the child movement roster to record times and locations of children's activities.

The Director prints out the child movement roster form daily when SCDC opens. Teachers record the times students arrive at and depart each destination (classroom, playground, etc). The child movement roster accompanies teachers when they leave the classroom for another destination. Teachers return the child movement roster to the Director at the end of each day. The Director maintains a file of all child movement rosters for at least 12 months.

Full and Free Access Policy

We are available to parents whenever we are open for questions and concerns. We encourage parents to visit the school at any time. When visiting the school for any reason, please check in and out with the Director. We require parental visits to last no longer than 30 minutes to minimize classroom disruption. Longer visits require the express permission of the Director.

SCDC grants free and full access to parents of children enrolled, unless a court order stipulates otherwise. The visit must not disrupt instructional or classroom activities or classroom discipline.

Clothing Policy

Children at SCDC play hard and learn using a variety of toys and materials. These activities may cause damage to clothing (tears, stains, etc). Parents are encouraged to consider the activities their children may be involved in when choosing clothing to wear to SCDC. SCDC will not be held responsible for any damage to children's clothing.

Toy Policy

While we realize that all children have special treasures such as stuffed toys, recent gifts, etc., we encourage these to be left at home. Should a child bring such a toy, clothing, game, or other possession to SCDC and the item is lost, damaged, or destroyed, SCDC shall not be held responsible. If possible, place the child's name on the item to help us keep it with the child's other belongings.

Special Event Days and Field Trips Policy

Special Days

Throughout the school year the school staff plans special events and activity days to enhance the monthly classroom themes. We encourage parents to participate by helping in the classroom or providing special snacks or activities.

Birthdays

Birthdays are very special occasions for children. We would like you to help us celebrate by bringing a special birthday snack. Cupcakes are appropriate for the occasion (these must be store-bought and in the original, unopened container). Please contact the teacher in advance of your child's birthday to make arrangements. Please limit celebrations to snacks (including paper items and beverages) or goodie bags.

Field Trips

During our Summer Camp Program, we offer field trips for elementary-age children. Elementary age children go on field trips with staff. Parents may attend at their option and at their own expense.

SCDC will map out all routes in advance.

All trip participants will wear identifying SCDC shirts with our school name and telephone number.

A parent or legal guardian will sign a consent form during registration.

A first aid kit, emergency contact information, and emergency transport authorization information for the children in the group will be taken on all trips.

A child movement roster will be maintained on all trips.

The staff driving the bus will be responsible for assuring all children are accounted for before the vehicle leaves the facility, when the children disembark at the destination, when the children re-enter the vehicle at the trip location, and again when the children disembark from the vehicle upon return to the SCDC facility. Staff will conduct a 'sweep' of the vehicle each time the vehicle is parked to be sure that no child is left in the vehicle.

The proper staff to child ratio will be maintained during the trip.

Children will never be left alone in a vehicle or unsupervised by an adult.

Inappropriate Language Policy

SCDC policy is that no foul language will be used in the facility or on the grounds. This policy applies to staff, children, and the child's parents or guardians, and their guests. It also applies to music, radio, iPod, or other electronic reproductions of another person's voice.

Staff violations of this policy may result in dismissal.

Adult (those who have a relationship with an enrolled child) violations of this policy may result in disenrollment of the child or banning the adult from the facility.

Child violations will be handled as follows:

A staff member must hear the violation first hand. If another child reports the violation, the staff member must verify what was actually said.

The staff member must talk with the potentially offending child to assure that a speech impediment or childish mispronunciation of another word was not interpreted as foul language.

In talking with the child, the staff member must try to determine where the child heard the foul language. If the child attributes the language to another person, the staff member must try to identify that person by name. If the child attributes the language to another source such as TV, radio, or someone whose name is unknown, the staff member is to try and determine the context, day, time, and location from the child, if possible.

The staff member is to record the information gleaned from the child on a behavior incident report.

School Suspension Policy

Children may attend SCDC after school if they ride the bus from their school to SCDC. Children not attending schools served by the SCDC bus may attend after school if the parent makes transportation arrangements. If your child was not in school for any reason, they may attend SCDC beginning at 3 PM if you provide transportation to SCDC. Under no circumstances will elementary age children be allowed to attend SCDC prior to 3 PM or the bus arriving, whichever is first, if the public schools are open. If your child is suspended from public school, they may attend SCDC's after school program provided their behavior here is acceptable.

Health and Safety Statement

SouthEast Child Development Center is inspected on a regular basis by the Department of Health.

This includes facility health and safety procedures as well as student health forms. The most recent inspection information is posted next to the tuition payment box.

Sick Child Policy

Purpose: The purpose of this policy is to prevent the introduction or spread of a communicable disease within the SCDC community, which includes children enrolled, their immediate families, and staff members.

Certification: By using SCDC services for their children, parents certify that they agree to follow this policy. The posting of this policy in the public areas of the Center, its inclusion in the Center enrollment package, and the placement of a copy in each child's cubby constitutes notification to the parents of the revised policy.

Procedures:

1. By bringing the child to SCDC, parents certify that the child has not had **any** fever or symptoms of illness for the twenty-four hours leading up to the arrival at SCDC. If the child has had any medication designed to reduce fever or other symptoms of illness in the twenty-four hour period leading up to arrival at SCDC, the child may **not** attend.
2. If a child at SCDC develops any of the symptoms in the table at right, we will begin monitoring temperature at 30-minute intervals. If the temperature history is increasing, we will alert the parents as soon as it goes above 100 degrees. The parent must pick up any child if the fever reaches 101 degrees.
3. Despite the temperature history in 2 above, if the child exhibits any one or combination of the symptoms listed in the table at right to the point where the child is unable to function normally in the Center environment, we will call the parents and ask them to pick the child up.
4. Once we notify the parent that they must pick the child up, they will have 60 minutes to take the child from SCDC. The Center will charge the parent \$1.00/minute for every minute after that initial 60-minute period until the parent or designated pickup person arrives at the Center.
5. A parent who repeatedly and knowingly sends or brings an ill child to SCDC is violating their certification to follow this policy. In such an instance, the Center reserves the right to revoke the child's enrollment in the Center.

Symptoms of Illness

- temporal temperature above 100F
- dry, hacking cough
- sore throat
- shaking chills
- severe muscle or body aches
- headache
- stuffy and runny nose
- profound fatigue
- crusty discharge, redness, or itching of the eyes
- diarrhea

SCDC Policy

Timely Payment for Services Policy

The following is our policy regarding payment for childcare services. All billing is through the Brightwheel app. Parents may pay through the app or in person by cash, check, or credit or debit card.

1. We charge your account on Monday for the childcare services for that week. We expect payment by close of business on Friday.
 2. If your account has a zero or credit balance by close of business on Friday, the rest of this policy does not affect you. SCDC will not allow a child to attend on Monday if their account shows a balance due @ 6.00 PM on the previous Friday. Your child will be allowed to stay only if you pay the full amount due on Monday morning.
 3. Once we disenroll your child, we will offer that classroom space to the next person on our waiting list.
 4. If you wish to reinstate your child, you may do so by paying the full amount due on the account plus a new \$50 registration fee. If there are open spaces in that classroom, your child may start immediately. If there are no open spaces in that classroom, we will place your child at the end of the waiting list and let you know when a space opens up at which time you will have two weeks to begin attending SCDC. If you fail to begin within the two weeks, you will relinquish that space and forfeit the \$50 registration fee. (For after school children, in addition to having a space in the classroom, you can only enroll if there is a seat available on the bus run to your child's school.)
- **For parents paying monthly:** We bill your account on the first of the month and expect payment by the 5th. If you have a balance due when we close on the 5th, or the next business day after the 5th if the 5th falls on a holiday or weekend, we will mark your account "At Risk For Disenrollment" and your Monday statement will note that status. After that, we will follow steps 4, 5, and 6 above.
 - **For parents paying every other week or twice a month:** We have no special provision for those in this category. We recommend that you pay a week ahead so that your balance never meets the "At Risk" criteria.
 - **"Auto Pay":** The Brightwheel app has an autopay provision. Autopay is voluntary and only the paying parent can set up autopay. To encourage its use, SCDC will reimburse the transaction charges incurred by the payment. Parents not using autopay are responsible to pay the transaction charges.
 - **Bad Checks:** Checks rejected by your bank automatically put you "At Risk." You will have one business day from the time we receive notice that a check failed to clear to pay all charges, fees, and penalties before we disenroll your child
 - On occasion, we offer promotional and other kinds of discounts. If we disenroll your child for nonpayment, we will cancel all discounts even if you re-enroll. At our option, we may reinstate the discounts after you have a six-month record of on time payments and weekly balances of zero or a credit balance.

Child Care Physical Activity Policy

Policy Statement

SouthEast Child Development Center recognizes the importance of physical activity for young children. Implementation of appropriate physical activity practices supports the health and development of children in care, as well as assisting in establishing positive lifestyle habits for the future.

Physical Activity in Child Care

The purpose of this policy is to ensure that children in care are supported and encouraged to engage in active play, develop fundamental movement skills and to have limited screen time. Our Center encourages all children to participate in a variety of daily physical activity opportunities that are appropriate for their age, that are fun and that offer variety. In order to promote physical activity and provide all children with numerous opportunities for physical activity throughout the day SouthEast Child Development Center will:

Daily Outdoor Play

- Encourage a least restrictive, safe environment for infants and toddlers at all times.
- Provide a designated safe outdoor area for infants (ages 0-12 months) for daily outdoor play.
- Provide toddlers (ages 1 through 2 year olds) with at least 60-90 minutes of daily outdoor active play opportunities across 2 or 3 separate occasions.
- Provide preschoolers and school age children (ages 3 through 12 year olds) with at least 90-120 minutes of daily outdoor active play opportunities across 2 or 3 separate occasions.
- Increase indoor active play time so the total amount of active play time remains the same, if weather limits outdoor time.
- Provide a variety of play materials (both indoors and outdoors) that promote physical activity.

Role of Staff in Physical Activity

- Will encourage children to be physically active indoors and outdoors at appropriate times.
- Will provide 5-10 minutes of planned physical activities at least 2 times daily for children age 3 and older.

Screen Time Limitations

- We do not permit screen time (e.g., television, movies, video games and computers) for infants and children two years and younger.

Physical Activity and Punishment

Staff members do not withhold opportunities for physical activity (e.g., not being permitted to play with the rest of the class or being kept from play time), except when a child's behavior is dangerous to himself or others. Staff members never use physical activity or exercise as punishment, e.g., doing push-ups or running laps. Play time or other opportunities for physical activity are never withheld to enforce the completion of learning activities or academic work. Our Center uses appropriate alternate strategies as consequences for negative or undesirable behaviors.

Appropriate Dress for Physical Activity

We at SouthEast Child Development Center have a Ready to Play Policy! Please bring your child ready to play and have fun each day. Your child will participate in both indoor play and outdoor play. Therefore, play clothes and shoes which can get dirty and allow for free and safe movement are most appropriate. We expect parents to provide children with appropriate clothing for safe and active outdoor play during all seasons.

For safety, children cannot wear open-toe shoes, sandals or flip-flops. In winter, provide a warm jacket, snowsuit, hat, mittens and boots. In spring and fall, provide a jacket or sweater, and boots and rain jacket on rainy days. In summer, provide light clothing, swimsuit, towel, hat and sunscreen. Please label all outer garments with your child's name!

It is our expectation that children will go outside EVERYDAY! (Exceptions are heat index is too high, temperature or wind chill is too cold, thunderstorms are in progress, etc) If you feel your child is too sick to go outside then he/she is too sick to be at the child care center. We request that you keep him/her at home until they are well enough to go outside.

Professional Development

Annual training on promotion of children's movement and physical activity is required for all staff.

Child Care Discipline Policy

Policy Statement

Praise and positive reinforcement are effective methods of behavior management of children. When children receive positive, nonviolent, and understanding interactions from adults and others, they develop good self-concepts, problem solving abilities, and self-discipline. Based on this belief, SouthEast Child Development Center uses a positive approach to discipline and practices the following discipline and behavior management techniques.

WE DO

- Communicate to children using positive statements.
- Communicate with children on their level.
- Talk with children in a calm quiet manner.
- Explain unacceptable behavior to children.
- Give attention to children for positive behavior.
- Praise and encourage the children.
- Reason with and set limits for the children.
- Apply rules consistently.
- Model appropriate behavior.
- Set up the classroom environment to prevent problems.
- Provide alternatives and redirect children to acceptable activity.
- Give children opportunities to make choices and solve problems.
- Help children talk out problems and think of solutions.
- Listen to children and respect the children's needs, desires and feelings.
- Provide appropriate words to help solve conflicts.
- Use storybooks and discussion to work through common conflicts.

WE DO NOT

- Inflict corporal punishment in any manner upon a child. (Corporal punishment is defined as the use of physical force to the body as a discipline measure. Physical force to the body includes, but is not limited to, spanking, hitting, shaking, biting, pinching, pushing, pulling, or slapping.)
- Use any strategy that hurts, shames, or belittles a child.
- Use any strategy that threatens, intimidates, or forces a child.
- Use food as a form of reward or punishment.
- Use or withhold physical activity as a punishment.
- Shame or punish a child if a bathroom accident occurs.
- Embarrass any child in front of others.

- Compare children.
- Place children in a locked and/or dark room.
- Leave any child alone, unattended or without supervision.
- Allow discipline of a child by other children.
- Criticize, make fun of, or otherwise belittle a child's parents, families, or ethnic groups.

Conferences will be scheduled with parents if particular disciplinary problems occur. If a child's behavior consistently endangers the safety of the children around him/her, then the Director has the right, after meeting with the parents and documenting behavior problems and interventions, to terminate childcare services for that particular child.

Note: If, at any point, there is an indication/suspicion that a child may have special needs, SouthEast Child Development Center will inform the child's family and make contact with Baby Net for assessment and assistance.